

### Summary

Most common viruses in GML catchment area

Rhinovirus

Parainfluenza

### Reminders

#### NEW TRICHOMONAS TEST

On May 6, 2014, the Trichomonas Culture (TRVC) was discontinued in all GHS computer systems. *Trichomonas vaginalis* (Test code TVGA), is now the system standard.

### A Publication of Geisinger Medical Laboratories 2014 Vol. (9):1-3, June 05, 2014

**RESPView Pathogen Surveillance 2013-2014: The predominant virus is rhinovirus, followed by parainfluenza.**

#### 10X Essentials: Acid Fast Bacilli (AFB) testing

**Effective immediately**, due to a national media shortage, specimens will be sent out for acid fast bacilli (AFB) smear and culture.

- Please expect a slight delay in smear results.
- In cases where *Mycobacterium tuberculosis* is highly suspected, please contact the laboratory in order for a direct smear to be performed at GMC.
- The laboratory is diligently working to implement alternative in-house culture options for AFB to mitigate the shortage.

If you have any questions, please contact the Doctoral Directors, Donna Wolk, Ph.D., D(ABMM) at 570-271-7467 or Raquel Martinez Ph.D., D(ABMM) at 570-214-6587.

**MRSA screen testing:** Please note that **once a patient has tested positive for MRSA, repeat testing is not warranted.** Please do not send swabs on patients known to be MRSA-positive. Duplicate orders will be cancelled by the laboratory.

**Welcome GCMC!** As of June 1<sup>st</sup>, GCMC integrated into the Sunquest Laboratory Information System. Thanks to the GCMC and GMC teams for a great job! For questions, please contact Angela Mazza, MT(ASCP), technical specialist at 570-703-4255 or Donna Young, BS, MT, Operations Manager at 570-703-7140.

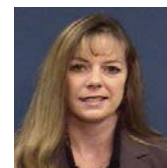
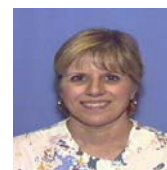
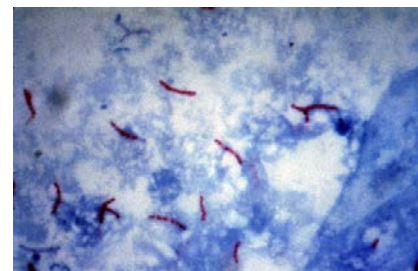
For questions about MRSA testing, please contact Microbiology Technical Specialists, Lisa Scicchitano, B.S., MT(ASCP) at 570-214-4294, Francis Tomashefski, B.S., MT(ASCP) at 570-271-6185, Dr. Donna Wolk, MHA, Ph.D, D(ABMM), System Director, Clinical Microbiology at 570-271-7467 or Dr. Raquel Martinez, Ph.D, D(ABMM), Director, Clinical Microbiology at 570-214-6587.

For newsletter questions, contact Christy Attinger at (570) 271-6338.

GEISINGER  
MEDICAL LABORATORIES

**“Make it the best.” - A. Geisinger**

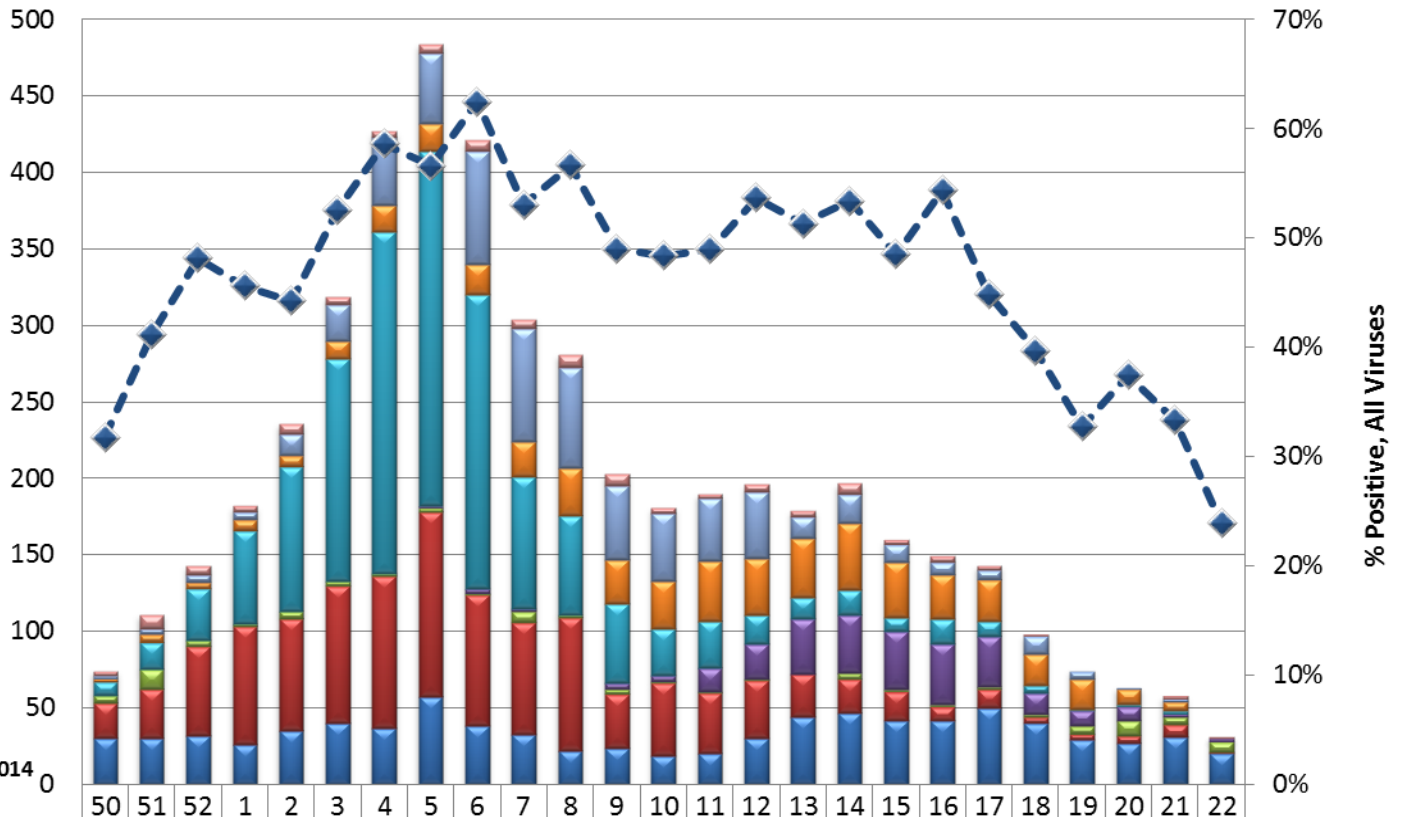
Page | 1



**GML RespVIEW  
2013-2014**

# Respiratory Viruses

CDC Respiratory Week, 2013-2014



adenovirus	3	9	6	4	7	5	4	6	7	6	8	8	4	3	5	4	7	3	4	3	1	0	0	2	1
coronavirus	2	4	5	5	14	24	44	46	74	74	66	48	44	41	43	14	19	12	8	6	12	5	1	2	0
hum.metapneumovirus	2	5	4	7	7	12	18	18	20	23	31	29	31	39	37	39	44	36	29	27	20	20	10	6	0
influenza A	9	18	34	61	95	145	223	232	192	86	65	52	31	31	19	14	16	9	16	10	5	1	1	2	0
influenza B	0	0	0	0	0	0	0	1	3	2	0	4	4	15	23	36	38	38	40	33	14	10	9	2	2
parainfluenza	5	13	4	2	5	3	2	3	1	7	2	3	1	1	1	0	4	1	1	2	2	5	10	5	7
respiratory syncytial virus	23	32	58	77	73	90	99	121	86	73	87	35	47	40	38	28	22	19	9	12	4	4	5	8	1
rhinovirus	30	30	32	26	35	40	37	57	38	33	22	24	19	20	30	44	47	42	42	50	40	29	27	31	20
% Positive Rollup (right axis)	32	41	48	46	44	53	59	57	62	53	57	49	48	49	54	51	53	48	54	45	40	33	37	33	24

### Weekly GML RespVIEW:Respiratory Virus Distribution CDC Week 22, 2013-2014

