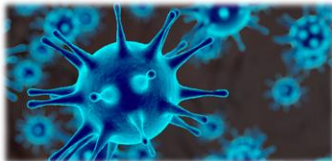


Laboratory Medicine: Infectious Disease Diagnostics

A Publication of Geisinger Laboratory Medicine Microbiology. Vol. (8):2 January 20, 2020

Novel Coronavirus (2019-nCoV)

The Centers for Disease Control and Prevention (CDC) is closely monitoring an outbreak caused by a novel (new) coronavirus first identified in Wuhan, Hubei Province, China. Chinese authorities identified the new coronavirus, which has resulted in close to 300 confirmed cases in China, including cases outside Wuhan, with additional cases being identified in a growing number of countries internationally. Exported human infections with the novel coronavirus have been confirmed in Thailand, Japan, and the Republic of Korea. The United States announced their first infection with 2019-nCoV detected in a traveler returning from Wuhan. Severe illness, including illness resulting in four deaths, has been reported in China, other patients have had milder illness. Currently, testing for this virus must take place at CDC, but in the coming days and weeks, CDC will share these tests with domestic and international partners through the agency's Emergency Use Authorization.

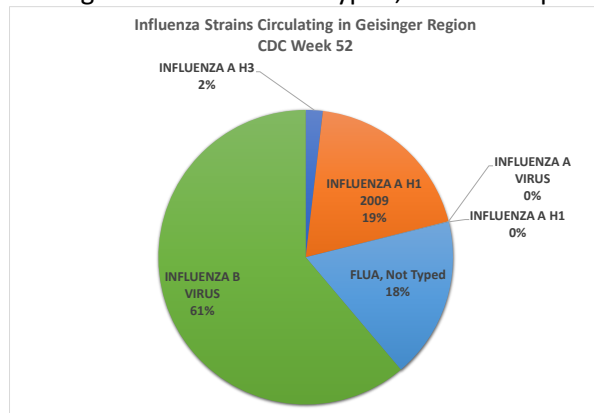


Coronaviruses are a large family of viruses, some causing illness in people and others that circulate among animals, including camels, cats and bats. Rarely, animal coronaviruses can evolve and infect people and then spread between people such as has been seen with [MERS](#) and [SARS](#).

Flu B still Common!

Flu B remains heavily predominant.

Among Influenza A strains typed, H1 2009 is predominant.



NOTES:

2019-nCoV

Flu B and A
predominate

Respiratory syncytial
virus remains in top tier

**Check out 10X
Essentials on
YAMMER**

<https://www.yammer.com/>



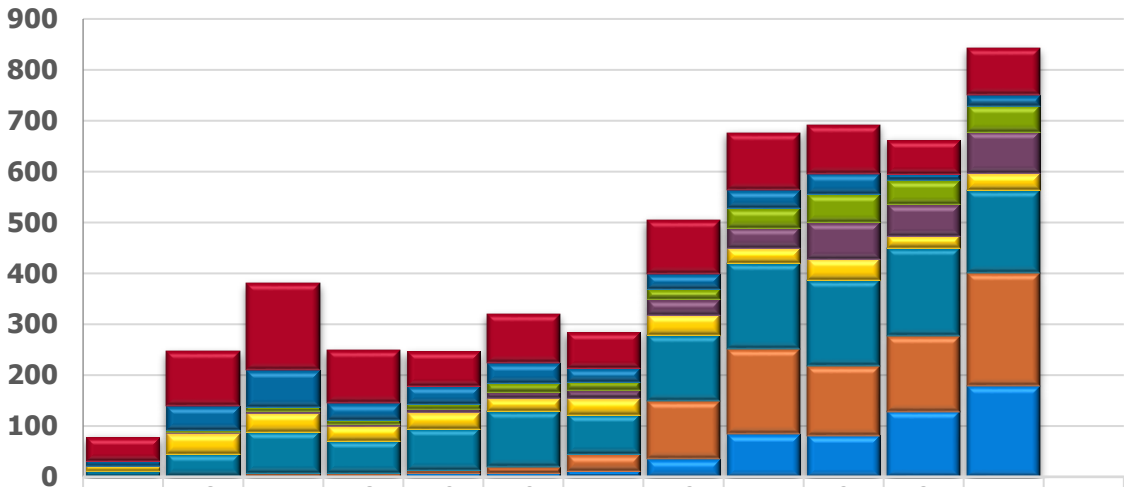
CDC MMWR Week 4, 2020 Respiratory Epidemiology: Geisinger's Respiratory View,

This week influenza B, influenza A, and respiratory syncytial virus predominate, followed by rhino/enterovirus.

Influenza reached 47% of all patients tested in Geisinger hospitals and GRL clinics; it is the first time that treatable viruses approached the number of untreatable viruses this season.

Raw Count, Respiratory Viruses, Positive Isolates

**Respiratory View©, Viruses from Geisinger's Diagnostic Medicine Intitute
Microbial Diagnostic Laboratories
MMWR/CDC week 4**



	45	46	47	48	49	50	51	52	1	2	3	4	5
■ Rhino/Enterovirus	47	107	171	104	67	96	70	105	113	95	66	92	0
■ Parainfluenza virus	9	47	71	32	36	39	27	30	35	40	12	20	0
■ Human Metapneumovirus	0	3	8	8	9	18	17	20	38	56	48	51	0
■ Coronavirus	1	3	4	3	7	11	16	30	40	71	62	82	0
■ Adenovirus	10	40	37	30	32	25	32	40	30	42	24	33	0
■ RSV	10	43	81	63	82	110	78	131	169	170	174	163	0
■ Influenza B	1	1	6	5	6	12	32	113	168	136	148	223	0
■ Influenza A	0	2	2	3	7	8	12	35	83	81	128	178	0