

Summary

Most common viruses in GML catchment area

Rhinovirus

RSV

Human metapneumovirus

Reminders

NEW TRICHOMONAS TEST

On May 6, 2014, the Trichomonas Culture (TRVC) was discontinued in all GHS computer systems. *Trichomonas vaginalis* (Test code TVGA), is now the system standard.

A Publication of Geisinger Medical Laboratories 2014 Vol. (8):1-4, May 30, 2014

RESPView Pathogen Surveillance 2013-2014: The predominant virus is rhinovirus, followed by RSV, and HPMV.

10X Essentials: NEW GMC OPTION FOR BLOOD CULTURES

- In response to the international blood culture shortage and in support of the **GHS PRIDE Sepsis** initiatives, GMC Microbiology now offers a new option for blood cultures.
- The new blood culture is named **BLCEI [(in EPIC, order Blood Culture, Early Intervention)]** in the smart group display name.
- BLCEI provides *faster results* and an *alternative method* should future blood bottle shortages threaten to impact our hospitals.
- BLCEI will be automatically collected, and are available to add to your Epic preference lists for the following GMC units/services.
 - **Emergency Medicine (GMC ED), and Intensive/Critical Care (GMC AICU). Providers, please order the new Blood Cultures option, BLCEI in Epic.**
 - The BLCEI option is also available for critically ill patients from **GMC Hematology-Oncology service.**
- GMC Phlebotomy services is equipped and trained for collection of BLCEI Blood Cultures.
- Planning is in process to determine the best way to integrate the BLCEI option to other laboratories outside of GMC.
- Call or page the Microbiology Doctoral Directors on call or GMC Bacteriology Specialist, Julie Riley, with questions.



NEW PROCESS FOR EMPLOYEE FLUID EXPOSURE TESTING (6/1/14).

- This process change came from a need to change the way these specimens are billed and to prevent them from flowing to EPIC.
- For exposed employee's, the test will be the ERDHIV (EXPOSURE RAPID HIV). This testing will be ordered using the employee's Geisinger MRN and ordered under the new location EMPEXPOS.

For questions about respiratory pathogen testing, please contact Microbiology Technical Specialists, Lisa Scicchitano, B.S., MT(ASCP) at 570-214-4294, Francis Tomaszefski, B.S., MT(ASCP) at 570-271-6185, Dr. Donna Wolk, MHA, Ph.D, D(ABMM), System Director, Clinical Microbiology at 570-271-7467 or Dr. Raquel Martinez, Ph.D, D(ABMM), Director, Clinical Microbiology at 570-214-6587.

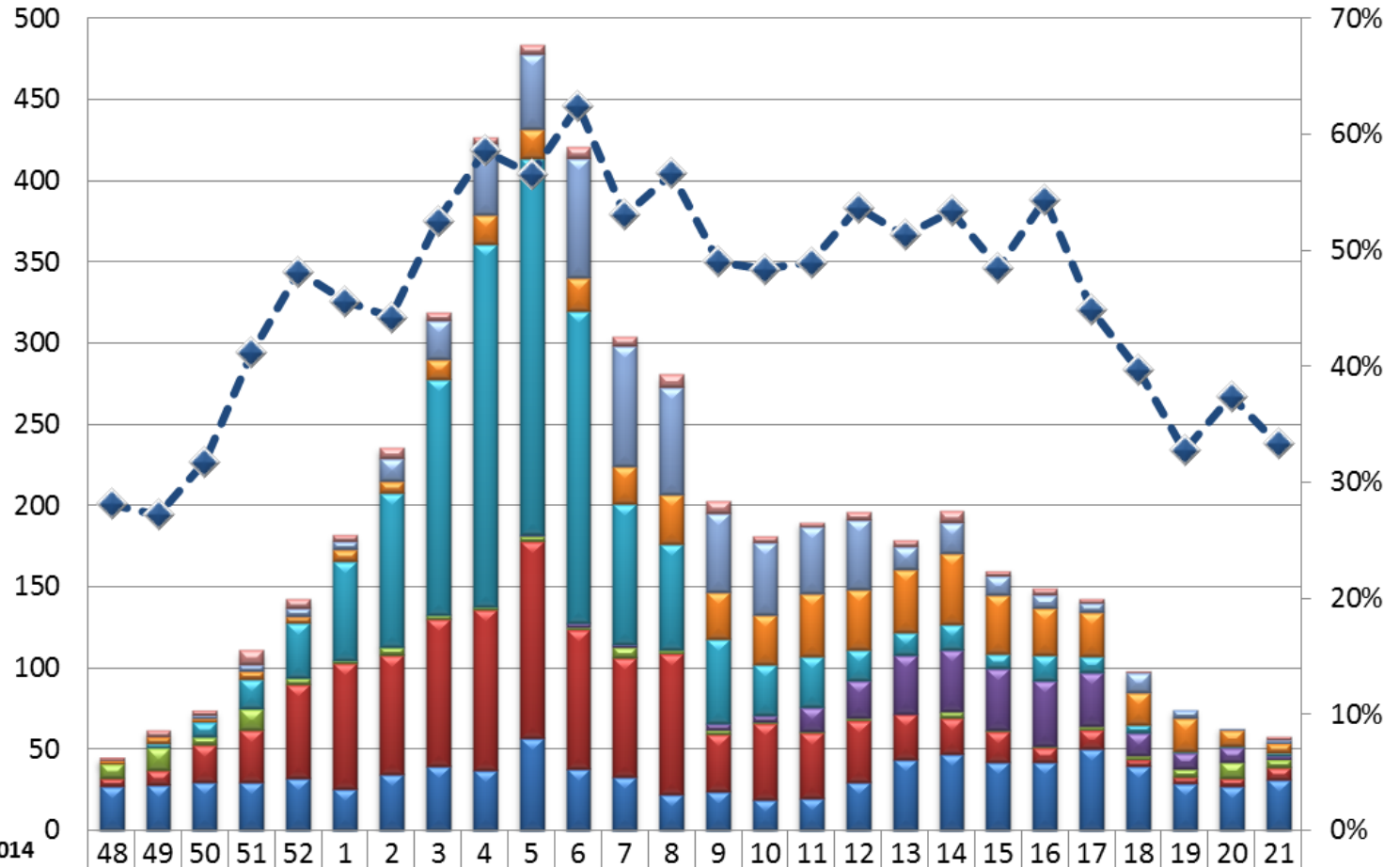
For newsletter questions, contact Christy Attinger at (570) 271-6338.

GEISINGER
MEDICAL LABORATORIES

"Make it the best." - A. Geisinger

GML RespVIEW 2013-2014

Respiratory Viruses



CDC Respiratory Week, 2013-2014

adenovirus	2	4	3	9	6	4	7	5	4	6	7	6	8	8	4	3	5	4	7	3	4	3	1	0	0	2
coronavirus	0	0	2	4	5	5	14	24	44	46	74	74	66	48	44	41	43	14	19	12	8	6	12	5	1	2
hum.metapneumovirus	2	4	2	5	4	7	7	12	18	18	20	23	31	29	31	39	37	39	44	36	29	27	20	20	10	6
influenza A	0	3	9	18	34	61	95	145	223	232	192	86	65	52	31	31	19	14	16	9	16	10	5	1	1	2
influenza B	0	0	0	0	0	0	0	0	0	1	3	2	0	4	4	15	23	36	38	38	40	33	14	10	9	2
parainfluenza	9	14	5	13	4	2	5	3	2	3	1	7	2	3	1	1	1	0	4	1	1	2	2	5	10	5
respiratory syncytial virus	5	9	23	32	58	77	73	90	99	121	86	73	87	35	47	40	38	28	22	19	9	12	4	4	5	8
rhinovirus	27	28	30	30	32	26	35	40	37	57	38	33	22	24	19	20	30	44	47	42	42	50	40	29	27	31
% Positive Rollup (right axis)	28	27	32	41	48	46	44	53	59	57	62	53	57	49	48	49	54	51	53	48	54	45	40	33	37	33

Weekly GML RespVIEW:Respiratory Virus Distribution CDC Week 21, 2013-2014

