

### Infectious Disease Diagnostics

#### A Publication of Geisinger Medical Laboratories Microbiology. Vol. (7):6. April 4, 2019

#### Laboratory testing for the evaluation of suspected cases of mumps virus

The Pennsylvania Department of Health (PADOH) issued a health alert on 03/02/2019, describing a mumps outbreak at Temple University in Philadelphia, PA (link to health alert: <https://www.health.pa.gov/topics/Documents/HAN/2019-PAHAN-437-03-02-ADV-Mumps.pdf>).

Per the PADOH alert, when clinically indicated, providers evaluating suspected mumps cases are advised to order the following tests. Tests are requested via Epic orders:

##### **Buccal swab for mumps PCR testing** (Test is sent to PADOH)

- Order as "other" with the following text "Buccal swab for mumps PCR, send to PADOH"

##### **Urine for mumps PCR testing** (Test is sent to PADOH)

- Order as "other" with the following text "Urine for mumps PCR, send to PADOH"

##### **Serum for mumps IgG and IgM testing**

- Mumps IgG Antibody, Sunquest test code: MUMPSG, Epic ID: 19102
- Mumps IgM Antibody, Sunquest test code: MUMIGM, Epic ID: 17784

**Nasopharyngeal swab for respiratory pathogen panel** to evaluate for other potential causes of parotitis.

- Respiratory PCR, Sunquest test code: RPPCR, Epic ID: 47176



#### NOTE:

Flu A still dominates the region

Refer to mumps testing guide for suspected mumps

Symptoms of mumps virus infection (found in Philadelphia, PA) are loss of appetite, chills, fever, swollen glands, headache, and pain while chewing.

Check out 10X Essentials on YAMMER <https://www.yammer.com/>

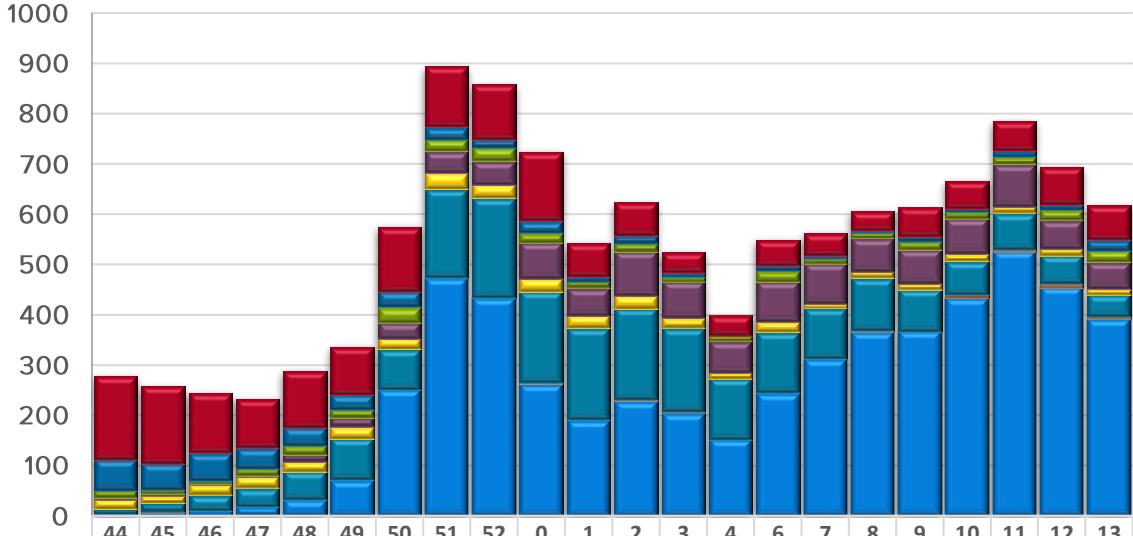


Contact Dr. Stacy Kenyon for question about infectious disease serology. Contact Dr. Raquel Martinez or Dr. Donna Wolk for questions about molecular testing.

**Week 13 Respiratory Epidemiology: influenza A still predominates as the most common respiratory virus; followed by rhinovirus/enterovirus and coronavirus.**

Raw Count, Respiratory Viruses, Positive Isolates

Respiratory View®, Viruses from Geisinger Diagnostic Medicine Intitute  
Microbiology Laboratories  
MMWR/CDC week 13, ending 3/30/2019



	44	45	46	47	48	49	50	51	52	0	1	2	3	4	6	7	8	9	10	11	12	13
■ Rhino/Enterovirus	166	153	119	97	112	95	128	120	110	138	67	66	41	40	52	45	39	58	56	60	76	69
■ Parainfluenza virus	61	52	55	41	36	30	31	24	16	23	9	15	8	0	10	5	4	9	6	11	10	21
■ Human Metapneumovirus	15	9	6	14	18	16	30	24	26	19	13	16	9	11	21	10	11	17	13	15	20	23
■ Coronavirus	3	3	2	2	14	18	32	43	47	72	54	88	73	62	80	81	66	67	70	84	56	54
■ Adenovirus	20	15	20	22	20	23	22	32	27	26	26	26	19	12	21	8	13	12	15	13	14	11
■ RSV	10	17	32	37	56	82	80	177	198	182	181	182	168	121	120	100	104	83	67	72	57	44
■ Influenza B	0	1	0	1	0	1	0	0	1	2	2	2	1	0	0	1	4	1	6	4	7	5
■ Influenza A	3	7	10	18	32	71	251	473	433	262	190	228	205	152	245	312	365	366	433	526	454	391