

### A Publication of Geisinger Medical Laboratories, Microbiology 2014: Vol. (4):1-3, February 20, 2014



#### RESPView Pathogen Surveillance 2013-2014

- The incidence of flu is declining, with an overall decrease in respiratory virus positivity.
- Influenza A and respiratory syncytial virus remain the predominant respiratory viruses.
- RSV and influenza account for 53% of all viruses identified.
- Of the influenza subtyped, most are Flu A H1N1 2009.

#### 10X Essentials: GWV rapid diagnostic testing

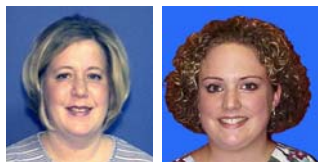
Effective March 4<sup>th</sup>, 2014, Geisinger Wyoming Valley will offer **on-site** rapid diagnostic testing for the following tests:

- Methicillin-resistant *Staphylococcus aureus* (MRSAP- MRSA Screen PCR)
- Vancomycin-resistant *Enterococcus* (VREP – VRE Screen, PCR)
- *Clostridium difficile*/Epidemiological strain (CDIFP – *C. difficile*/EPI PCR).



These tests will no longer be sent to GMC for testing and as such, turnaround times will improve for MRSA, VRE and *C. difficile*.

If you have any questions about this information, please contact Amanda Mika, Technical Specialist at 570-808-5662, Lisa Scicchitano, Technical Specialist at 570-214-4294, Donna Wolk, Ph.D., D(ABMM) at 570-271-7467 or Raquel Martinez Ph.D., D(ABMM) at 570-214-6587.



#### With Gratitude:

Thanks to Lisa Scicchitano, MT(ASCP) and Amanda Mika MT(ASCP), Technical Specialists at GMC and GWV respectively, for their work with the Geisinger Wyoming Valley implementation team for the Cepheid Xpert assays (MRSAP, VREP and CDIFP). As of March 4, 2014, turnaround times will drastically improve at GWV for MRSA, VRE and *C. difficile* because of the team's outstanding efforts.

For questions about respiratory pathogen testing, please contact, Dr. Donna Wolk, MHA, Ph.D, D(ABMM), Director, Clinical Microbiology at 570-271-7467 or Dr. Raquel Martinez, Ph.D, D(ABMM), Director, Clinical Microbiology at 570-214-6587.

**Questions:** For newsletter questions, contact Christy Attinger at (570) 271-6338.

GEISINGER  
MEDICAL LABORATORIES

“Make it the best.” - A. Geisinger

Page | 1

#### Summary

Most common viruses in GML regions

Influenza A H1N1

RSV

rhinovirus

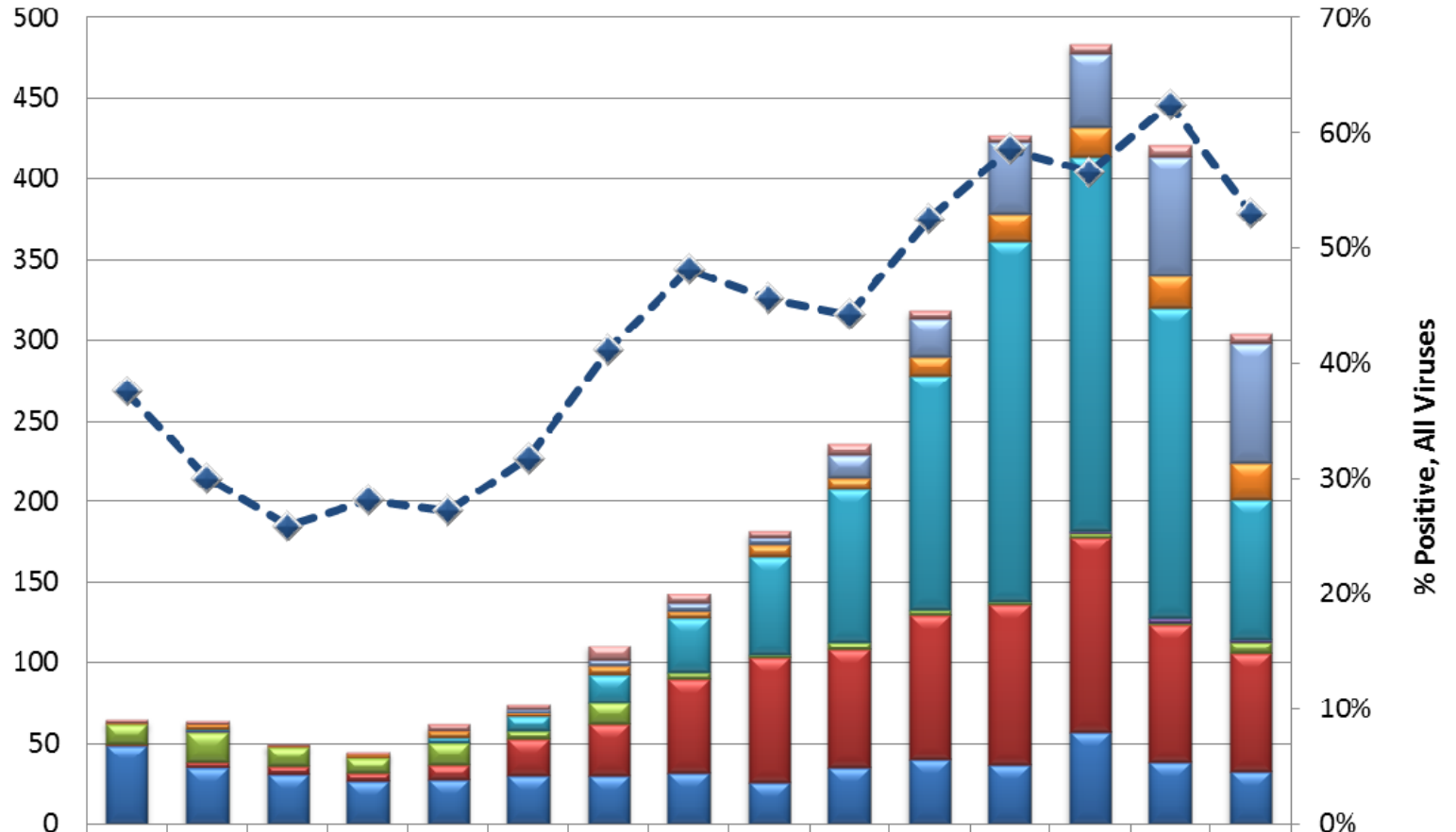
#### REMINDERS

Choose PCRABR (Flu/RSV) for Outpatients

USE RVPCR (full respiratory panel) for in-patients or immunocompromised and other at risk out-patients

**GML RespVIEW  
2013-2014**

**# Respiratory Viruses**



**CDC Respiratory Week, 2013-2014**

	45	46	47	48	49	50	51	52	1	2	3	4	5	6	7
adenovirus	2	2	1	2	4	3	9	6	4	7	5	4	6	7	6
coronavirus	0	0	0	0	0	2	4	5	5	14	24	44	46	74	74
Hum. metapneumovirus	1	3	1	2	4	2	5	4	7	7	12	18	18	20	23
influenza A	0	1	0	0	3	9	18	34	61	95	145	223	232	192	86
influenza B	0	1	0	0	0	0	0	0	0	0	0	0	1	3	2
parainfluenza	12	19	12	9	14	5	13	4	2	5	3	2	3	1	7
respiratory syncytial virus	1	3	5	5	9	23	32	58	77	73	90	99	121	86	73
rhinovirus	49	35	31	27	28	30	30	32	26	35	40	37	57	38	33
-◆- % Positive Rollup (right axis)	38%	30%	26%	28%	27%	32%	41%	48%	46%	44%	53%	59%	57%	62%	53%

### Weekly GML RespVIEW:Respiratory Virus Distribution CDC Week 7, 2013-2014

