

### Summary

Most common viruses in GML cachement area

rhinovirus

parainfluenza

1<sup>st</sup> influenza A identified by GML

Legionellosis in Lehigh County

### A Publication of Geisinger Medical Laboratories Vol. (19):1-2, November 18, 2013

#### RESPView Pathogen Surveillance 2013-2014

- The predominant virus is rhinovirus. Followed by parainfluenza virus
- There is minimal influenza activity in the Northeast portion of the US.
- GML documented its first case of influenza A for the 2013-2014 respiratory season.

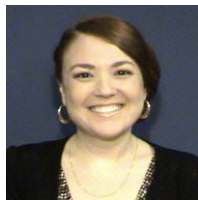
**10X Essentials:** The PA Department of Health is investigating cases of **Legionnaires' disease** associated with an outpatient medical facility in Lehigh County. PADOH is asking clinicians to have a heightened clinical suspicion for legionellosis and consider:

- a. Chest radiograph
- b. Diagnostic laboratory tests, which could include:
  - i. Legionella PCR (the most sensitive and fastest option)
  - ii. Culture of sputum/respiratory secretions for *Legionella* spp.
  - iii. Legionella paired acute and convalescent sera (opt.)

**Note: Routine respiratory cultures and Gram's stains will NOT detect *Legionella*.**

**What are the usual symptoms of Legionellosis?** - The early symptoms of Legionellosis may be flu-like with muscle aches, headache, tiredness and dry cough followed by high fever, chills and occasionally diarrhea. <http://www.cdc.gov/legionella>

#### 10X Welcome:



Welcome to Dr. Raquel Martinez, our new Associate Director of Microbiology. Dr. Martinez comes with the highest recommendations from the University of Washington by way of Dartmouth and UC Riverside. A native of N. California, Raquel is an accomplished artist and we are excited to share in her microbiology expertise.

Also new to our Microbiology team, welcome to Angela Mazza, MT(ASCP), the technical specialist and her team from Geisinger Community Medical Center, and Christon Henderson MLT, and her team from Geisinger Bloomsburg.



Angela

Christon

For questions about respiratory pathogen testing, please contact Microbiology Technical Specialists, Lisa Scicchitano, B.S., MT(ASCP) at 570-214-4294, Francis Tomashefski, B.S., MT(ASCP) at 570-271-6185, Dr. Donna Wolk, MHA, Ph.D, D(ABMM), System Director, Clinical Microbiology at 570-271-7467 or Dr. Raquel Martinez, Ph.D, Associate Director, Clinical Microbiology at 570-271-6338

**Questions:** For newsletter questions, contact Christy Attinger at (570) 271-6338.

**"Make it the best." - A. Geisinger**

**GEISINGER**  
MEDICAL LABORATORIES



# Weekly GML RespVIEW: Number of Positives per Week 2013-2014

CDC Week 46

