

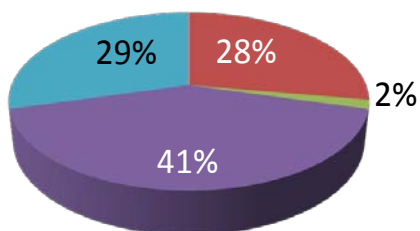
10X Essentials

Infectious Disease Diagnostics in the Geisinger Health System

A Publication of Geisinger Medical Laboratories
Vol. (13):1-3, February 16, 2013

Influenza Types and Subtypes, GML, 2013 CDC
Week 7, n=123

• H1 Seasonal • H3 Seasonal • H1N1 2009
• Flu A not typed • Influenza B



RESPView Pathogen Surveillance 2012-2013 Influenza/Respiratory syncytial virus (RSV) Report

- Flu A is still decreasing; however, **we experienced an uptick in fluB** this week.
- The graph to the left is changed to include influenza A subtypes as well as influenza B detected.
- **In 2013 CDC week 7, ending February 16, 2013, influenza A predominates, followed by influenza B, and RSV.** The diversity of viruses is high with representative viruses from all viral groups.
- **38% of samples submitted were positive for at least one virus.**

- ***Remember no laboratory test method reaches 100% sensitivity or specificity. As the season begins to wane, test specificity may decline as the population transitions to low viral prevalence.***

10X Essentials:

ALERT: There is an international shortage of blood culture bottles

Short-term: For now, we believe we will have enough supply to meet the needs of Geisinger patients. Geisinger Medical Laboratory and GHS Purchasing made arrangements with our supplier to protect supply chain to the extent we can. **Reminder: As always, order blood cultures only in patients for whom clinical symptoms or settings warrant their use.**



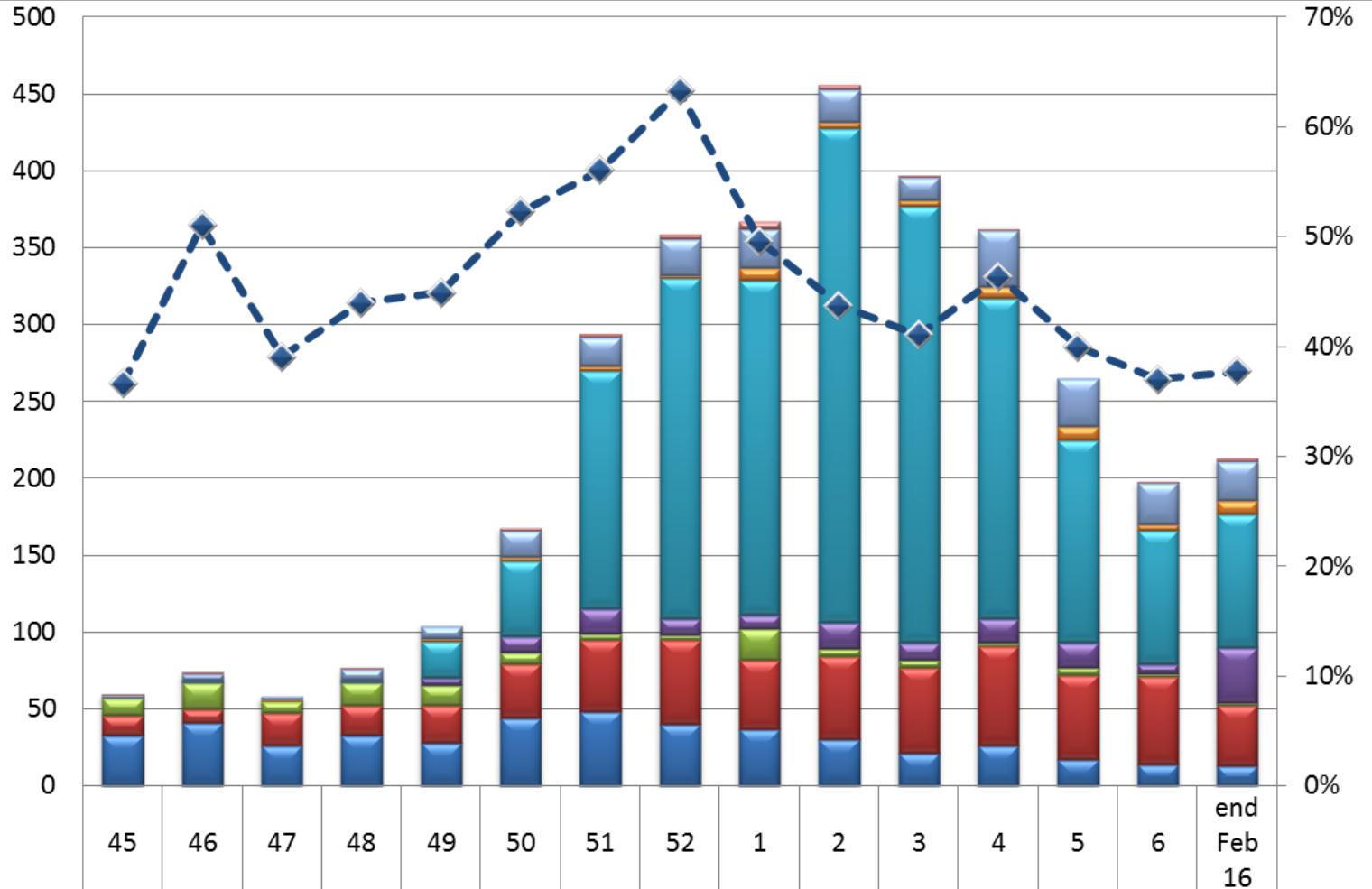
Thanks to Julie Riley, Technical Specialists/Medical Laboratory Scientist in Bacteriology for her proactive efforts to mitigate impact of the blood culture bottle shortage for GHS. Through her efforts, we have supplies right now, while other systems do not. Give her a big thumbs up if you see her.

Long-term: Should further shortages affect the use of the standard aerobic and anaerobic bottles (green and orange, respectively), we will plan to change the type of bottle used and will notify providers if the bottles and color tops change.

Questions: For newsletter questions, contact Christy Attinger at (570) 271-6338 or me.
Best regards, Donna M. Wolk, MHA, Ph.D., D(ABMM), GML Director of Microbiology

**GML RespVIEW
2012-2013**

Respiratory Viruses



adenovirus	1	1	0	1	0	2	2	3	5	3	1	1	0	1	2
coronavirus	2	4	2	7	8	17	19	24	25	21	15	36	31	27	25
human metapneumovirus	0	0	1	0	2	3	3	2	8	4	4	8	9	4	9
influenza A	0	1	0	1	24	49	155	221	218	322	284	208	132	87	87
influenza B	0	1	0	1	5	10	16	11	9	17	11	16	16	6	36
parainfluenza	11	17	8	15	13	8	4	3	20	5	5	2	5	2	2
respiratory syncytial virus	13	9	21	19	24	35	47	55	45	54	56	65	55	57	39
rhinovirus	33	41	26	33	28	44	48	40	37	30	21	26	17	14	13
% Positive Rollup	37%	51%	39%	44%	45%	52%	56%	63%	50%	44%	41%	46%	40%	37%	38%