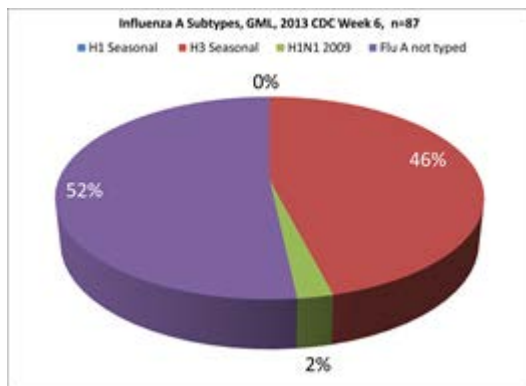


10X Essentials

Infectious Disease Diagnostics in the Geisinger Health System

A Publication of Geisinger Medical Laboratories
Vol. (12):1-3, February 11, 2013



Influenza/Respiratory syncytial virus (RSV) Report

- Flu season winds down at GML, with a total of 87 influenza A positives samples/week 6, down from a season high of 322/week.
- GML reports continued decline in the number of influenza viruses detected with continued trend for **influenza A, Seasonal H3** and rare Influenza A, H1N1 reported.
- Influenza B virus and RSV continues to circulate
- **Remember no laboratory test method reaches 100% sensitivity or specificity. As the season begins to wane, test specificity may decline as the population transitions to low viral prevalence.**

10X Essentials: GHS RT-PCR Standards for Viral Testing

Influenza: Based on recommendations of the Centers for Disease Control, Geisinger Medical Laboratories (GML) **discourages the use of membrane-based enzyme immunoassay methods for detection of influenza (sensitivity can be as low as 50%)**. GML laboratories comply with reflexive retesting of the influenza specimens by the more specific and sensitive molecular* methods (sensitivity typically > 95%).

<http://www.cdc.gov/flu/professionals/diagnosis/rapidlab.htm>



RSV: Binax NOW Rapid RSV EIA is the approved for RSV testing for patients age 5 yrs. or less (sensitivity ~90%) but **ONLY** in conjunction with reflex testing of negative samples. **Negative RSV EIAs are reflexed to molecular testing in the GML. (*INFLUENZA A/B AND RSV PCR (PCRABR) for outpatients and for in-patients and ED, RESPIRATORY PCR (RVPCR)**

<http://www.cdc.gov/rsv/clinical/labtesting.html>

Weekly Summary, RESPView Pathogen Surveillance 2012-2013

In 2013 CDC week 6, ending February 9, 2013, **influenza A predominates, followed by RSV**. The diversity of viruses is high with representative viruses from all viral groups. **37% of samples submitted were positive** for at least one virus.

Questions: For newsletter questions, contact Christy Attinger at (570) 271-6338 or me.

Best regards, Donna M. Wolk, MHA, Ph.D., D(ABMM), GML Director of Microbiology

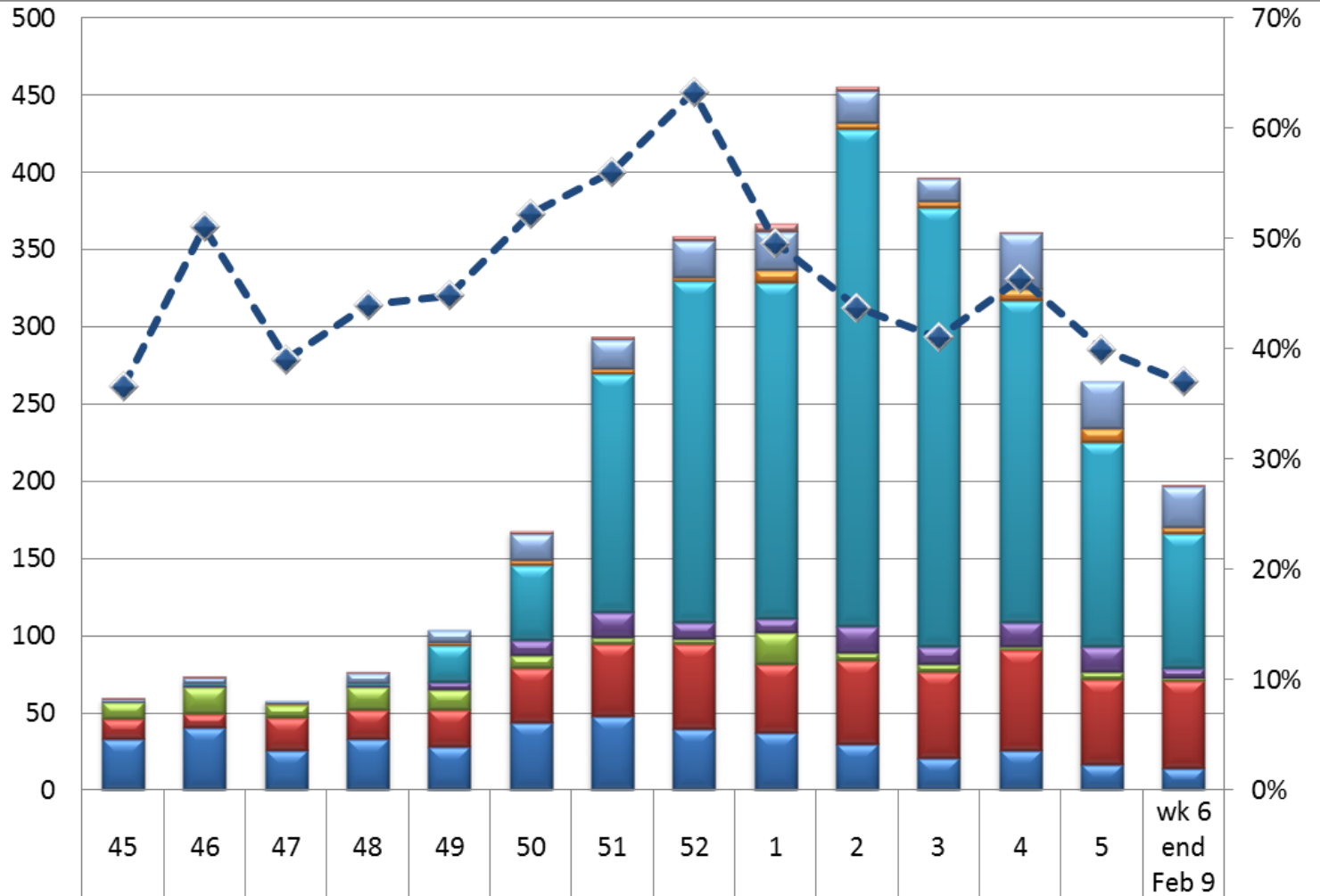
GEISINGER
MEDICAL LABORATORIES

"Make it the best." - A. Geisinger

Page | 1

**GML RespVIEW
2012-2013**

Respiratory Viruses



% Positive, All Viruses

adenovirus	1	1	0	1	0	2	2	3	5	3	1	1	0	1
coronavirus	2	4	2	7	8	17	19	24	25	21	15	36	31	27
human metapneumovirus	0	0	1	0	2	3	3	2	8	4	4	8	9	4
influenza A	0	1	0	1	24	49	155	221	218	322	284	208	132	87
influenza B	0	1	0	1	5	10	16	11	9	17	11	16	16	6
parainfluenza	11	17	8	15	13	8	4	3	20	5	5	2	5	2
respiratory syncytial virus	13	9	21	19	24	35	47	55	45	54	56	65	55	57
rhinovirus	33	41	26	33	28	44	48	40	37	30	21	26	17	14
% Positive Rollup	37%	51%	39%	44%	45%	52%	56%	63%	50%	44%	41%	46%	40%	37%

wk 6
end
Feb 9