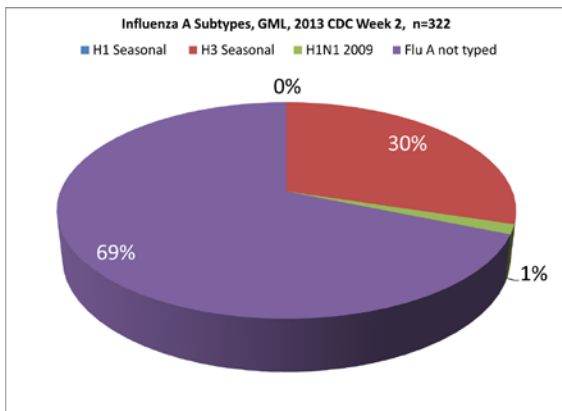


# 10X Essentials

## Infectious Disease Diagnostics in the Geisinger Health System

A Publication of Geisinger Medical Laboratories  
Vol. (11):1-3, January 27, 2013



### Influenza/Respiratory syncytial virus (RSV) Report

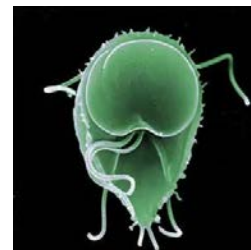
- FINALLY – SOME RELIEF!!!!!!
- GML reports a decline in the number of influenza viruses detected with continued trend for **influenza A, Seasonal H3 and** rare Influenza A, H1N1 reported.
- Influenza B virus and RSV continues to circulate
- **ALERT: The Centers for Disease Control and Prevention reports widespread influenza activity in 47 of 50 states.**

### 10X Essentials: Parasite Screen Protocol



***Giardia duodenalis (lamblia)* and *Cryptosporidium parvum*** are the most prevalent causes of parasitic infection in our geographic area (over 90 % of all parasites detected). For this reason, GML recommends that Giardia EIA Stool exam (GEIA) and/or Cryptosporidium exam (CRYIA) are considered to be the first actionable test requests for patients with no predisposing factors. **ORDER GEIA and CRYIA prior to performing a full Ova and Parasite exam**

**(O&P).** A full O & P exam may be warranted if your patient has two negative EIA exams and still exhibits symptoms of diarrhea or if your patient has a relevant travel history, is a past or present resident of a developing country, is institutionalized or immunosuppressed.



### Weekly Summary, RESPView Pathogen Surveillance 2012-2013

In 2013 CDC week 4, ending January 26, 2013, **influenza A predominates, followed by RSV.** Influenza activity dropped, and a slight uptick in coronavirus and RSV was observed. The diversity of viruses is high with representative viruses from all viral groups. **46% of samples submitted were positive** for at least one virus. ***Mycoplasma pneumonia* continues to circulate at extremely low levels.**

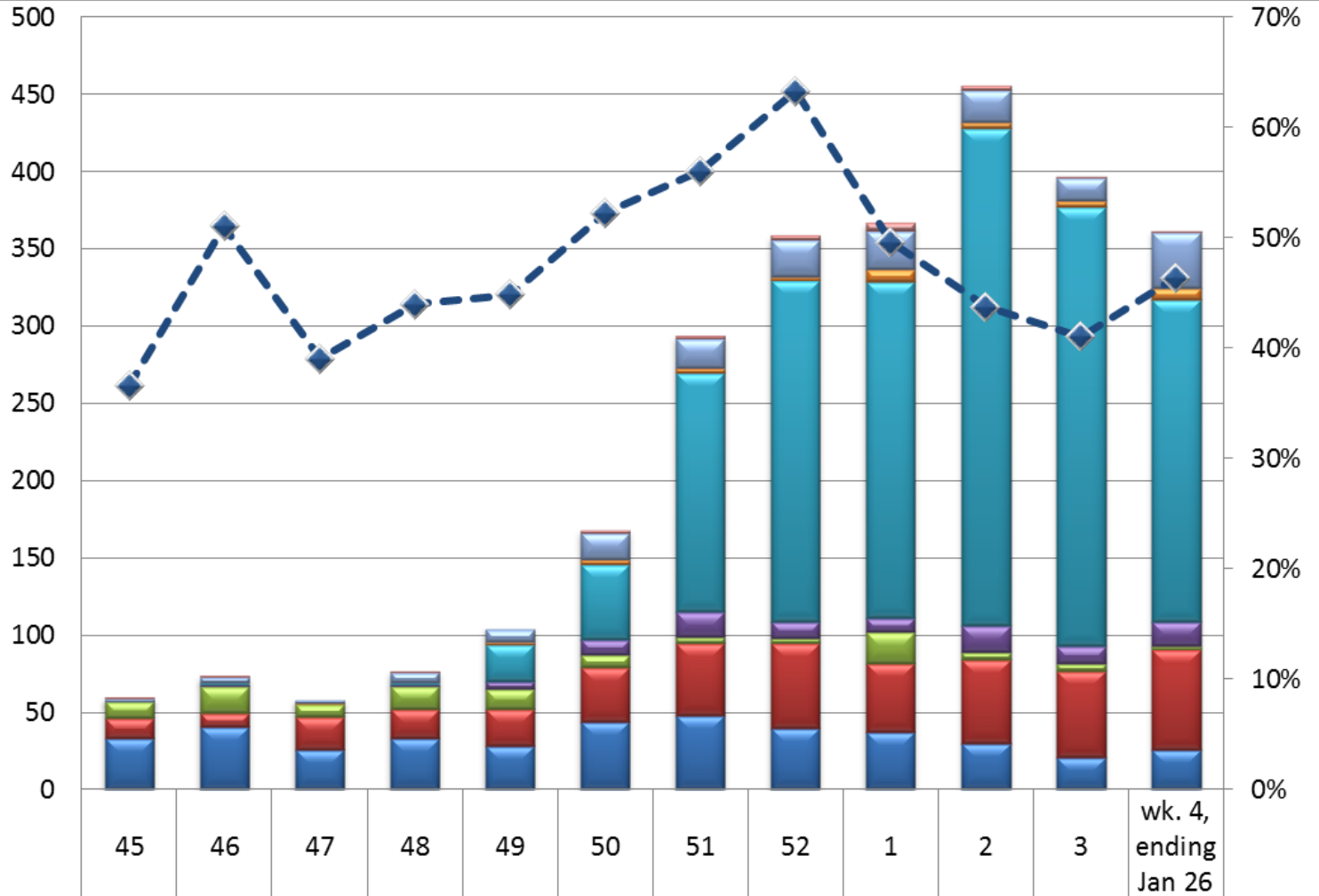
**Questions:** For newsletter questions, contact Christy Attinger at (570) 271-6338 or me.  
*Best regards, Donna M. Wolk, MHA, Ph.D., D(ABMM), GML Director of Microbiology*

GEISINGER  
MEDICAL LABORATORIES

**"Make it the best." - A. Geisinger**

**GML RespVIEW  
2012-2013**

# Respiratory Viruses



% Positive, All Viruses

adenovirus	1	1	0	1	0	2	2	3	5	3	1	1
coronavirus	2	4	2	7	8	17	19	24	25	21	15	36
human metapneumovirus	0	0	1	0	2	3	3	2	8	4	4	8
influenza A	0	1	0	1	24	49	155	221	218	322	284	208
influenza B	0	1	0	1	5	10	16	11	9	17	11	16
parainfluenza	11	17	8	15	13	8	4	3	20	5	5	2
respiratory syncytial virus	13	9	21	19	24	35	47	55	45	54	56	65
rhinovirus	33	41	26	33	28	44	48	40	37	30	21	26
% Positive Rollup	37%	51%	39%	44%	45%	52%	56%	63%	50%	44%	41%	46%