

10X Essentials

Geisinger

Diagnostic Medicine Institute

Infectious Disease Diagnostics

A Publication of Geisinger Medical Laboratories
Microbiology. Vol. (4):2. January 26, 2018

Geisinger's Respiratory Pathogen Panel (RPPCR) Saves Lives

A retrospective study was conducted to assess the impact of first-in first-out multiplex respiratory pathogen testing (intervention) compared to batch testing for the GMC ICU patient population. Our study demonstrated that rapid PCR results improve downstream patient and operational outcomes (reduced turnaround times). The following data variables showed statistical post-implementation improvement: 28-day mortality (Figure A), ICU days (Figure B), length of stay (*), ventilator days (*), anti-microbial (viral and bacterial) utilization (Figures C and D), and total cost (*).

*Data not shown, but statistically improved.

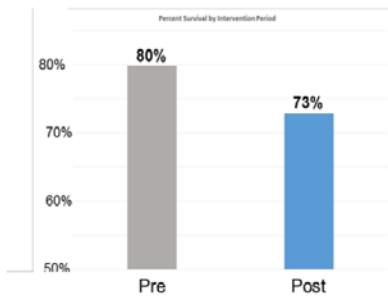


SUMMARY

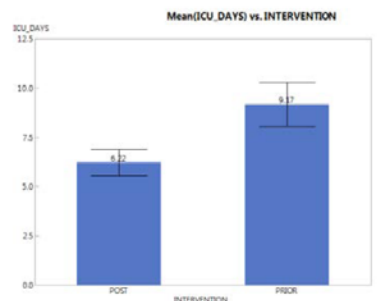
Check out 10X Essentials on YAMMER
https://www.yammer.com/geisinger.edu/#/threads/inGroup?type=in_group&feedId=8104830&view=all

Continue to order the Respiratory Pathogen Panel (RPPCR) for in-patients and high risk out-patients.

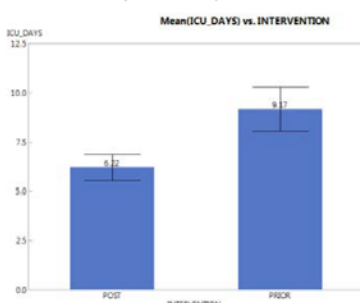
A. Mortality decreased 10%
($P < 0.02$)



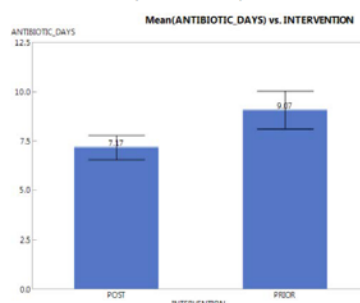
B. ICU days decreased 3 days
($P < 0.0001$)



C. Antiviral days decreased 0.6 days
($P < 0.05$)



D. Antibiotic days decreased 2 days
($P < 0.002$)



Influenza A on the Rise

Flu is still “widespread” in PA this past week. In some populations, the flu vaccine will have only 10% coverage for flu strains.

If you have any questions, please contact the Doctoral Directors, Donna Wolk, Ph.D., D(ABMM) at 570-271-7467 or Raquel Martinez Ph.D., D(ABMM) at 570-214-6587.



A Publication of Geisinger Medical Laboratories
Microbiology. Vol. (4):2. January 26, 2018

Influenza A Continues Rise

Influenza A is depicted on the bottom bar of the graph in the light blue

